

TOODYAY PUMPS

Additional details pertaining to Application for expansion of business at 55 Railway Road, Toodyay WA 6566.

Re: Proposal for expansion of business activities at 55 Railway Road, Toodyay WA 6566 known as Toodyay Pumps to include Mechanical Repairs.

It is our intention to expand into light mechanical work and light fabrication (exhaust systems)

This will entail using all existing equipment at the workshop i.e. car hoist, lathe and welder.

Proposed operating hours will be Monday – Friday 8am – 5pm & Saturday 8am – 1pm

This will involve 1 extra person to operate.

Ample parking on site and there will be no significant increase in traffic.

Thank you for your consideration.



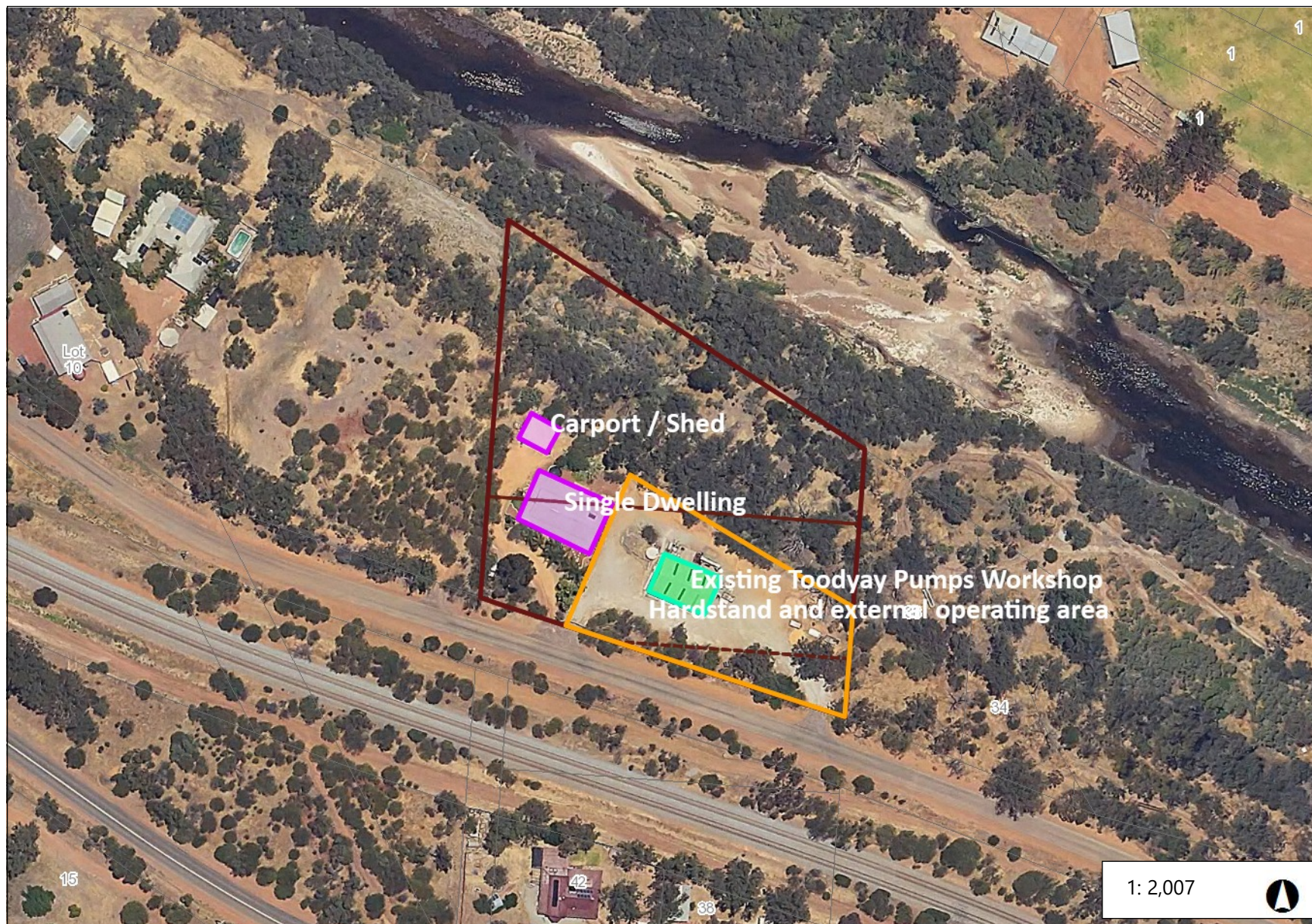
P - parking



Lots 54-56 Railway Road, West Toodyay

Legend

☐ Cadastre



Landgate information contained in this printed map is for personal and non-commercial use and is to be used as a guide only. Use for commercial advantage or monetary compensation is strictly prohibited. The Western Australia Land Information Authority (Landgate) takes no responsibility as to the reliability, currency, or accuracy of Landgate data contained on this website or any output derived from that data.

Notes

Existing developed areas - Toodyay Pumps

0.1 0 0.05 0.1 Kilometers

Date produced: 06-Jan-2023

This map is a user generated static output from an Internet mapping site and is for reference only. Data layers that appear on this map may or may not be accurate, current, or otherwise reliable.

THIS MAP IS NOT TO BE USED FOR NAVIGATION



Lots 54-56 Railway Road, West Toodyay

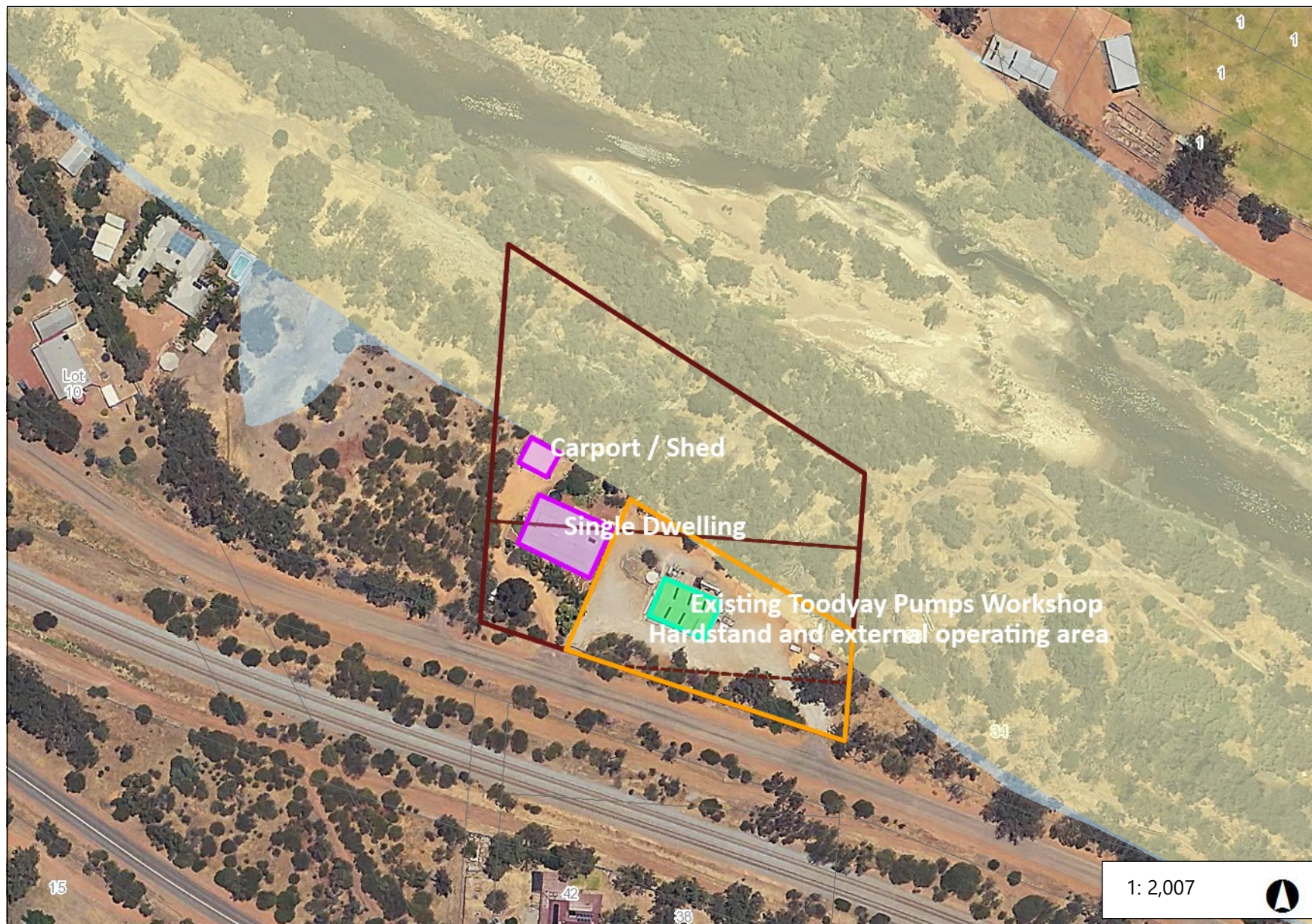
Legend

☐ Cadastre

FPM 1 in 100 (1%) AEP
Floodway and Flood Fringe
Area (DWER-014)

 Floodway

 Flood Fringe



Landgate information contained in this printed map is for personal and non-commercial use and is to be used as a guide only. Use for commercial advantage or monetary compensation is strictly prohibited. The Western Australia Land Information Authority (Landgate) takes no responsibility as to the reliability, currency, or accuracy of Landgate data contained on this website or any output derived from that data.

Notes

Floodway and floodfringe encroachment

0.1 0 0.05 0.1 Kilometers

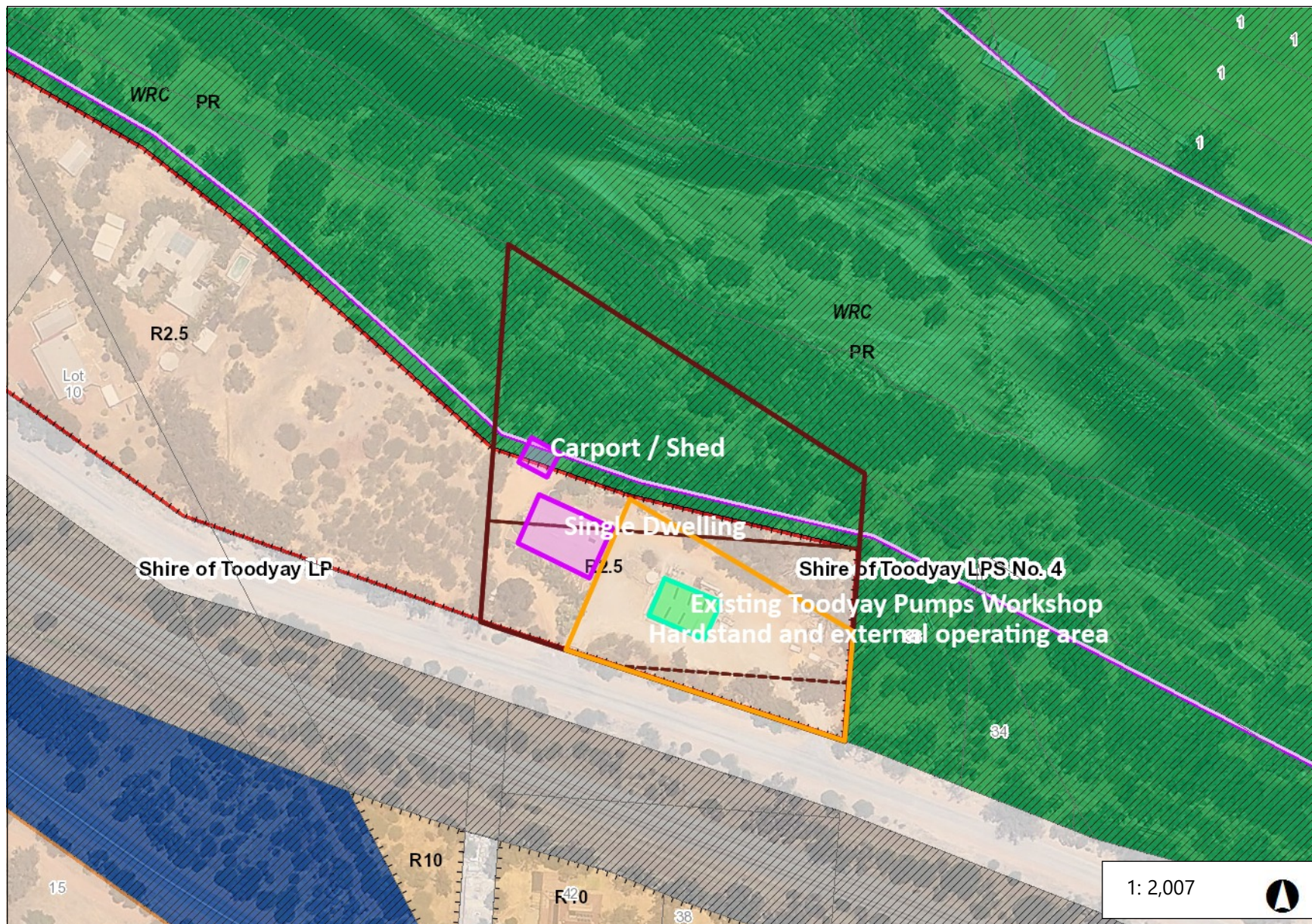
Date produced: 06-Jan-2023

This map is a user generated static output from an Internet mapping site and is for reference only. Data layers that appear on this map may or may not be accurate, current, or otherwise reliable.

THIS MAP IS NOT TO BE USED FOR NAVIGATION



Lots 54-56 Railway Road, West Toodyay



Legend

- Cadastral
- Local Planning Scheme Boundary
- Other Categories - Areas (SCA, DCA, DA etc)
- R-Code Boundary
- Local Planning Scheme Zones**
 - District roads
 - Local roads
 - Railway purposes
 - Recreation and conservation
 - Residential
 - Residential development
 - Special residential

Landgate information contained in this printed map is for personal and non-commercial use and is to be used as a guide only. Use for commercial advantage or monetary compensation is strictly prohibited. The Western Australia Land Information Authority (Landgate) takes no responsibility as to the reliability, currency, or accuracy of Landgate data contained on this website or any output derived from that data.

Notes

Local Planning Scheme No.4 - Zones

0.1 0 0.05 0.1 Kilometers

Date produced: 06-Jan-2023

This map is a user generated static output from an Internet mapping site and is for reference only. Data layers that appear on this map may or may not be accurate, current, or otherwise reliable.

THIS MAP IS NOT TO BE USED FOR NAVIGATION